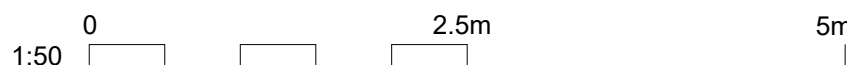


- Notes
1. For Planning purposes only.
  2. This drawing shall be read in conjunction with all other drawings, reports and specifications.
  3. Unless otherwise indicated, all dimensions are in metres and all levels are in metres relative to Ordnance datum at Malin Head\*
  4. Do not scale off this drawing. Use figured dimensions only and contact the Clients Representative where any clarification is required.
  5. Layout and size of drainage elements subject to minor changes pending detail design and the outcome of site investigations (including Infiltration testing in accordance with BRE Digest 365)

Key to symbols



Reference drawings

229100591-MMD-01-XX-DR-D-1310 Tonroe Substation - Proposed Drainage Layout  
229100591-MMD-01-XX-DR-D-1311 Typical Drainage Details - Sheet 1 of 4  
229100591-MMD-01-XX-DR-D-1312 Typical Drainage Details - Sheet 2 of 4  
229100591-MMD-01-XX-DR-D-1314 Typical Drainage Details - Sheet 4 of 4

PL1	31/05/2022	SHY	Issued for Planning	PF	DH
Rev	Date	Drawn	Description	Ch'k'd	App'd

M

MOTT  
MACDONALD

South Block  
Rockfield  
Dundrum  
Dublin 16  
Ireland  
T +353 (0)1 291 6700  
F  
W www.mottmac.com



Title

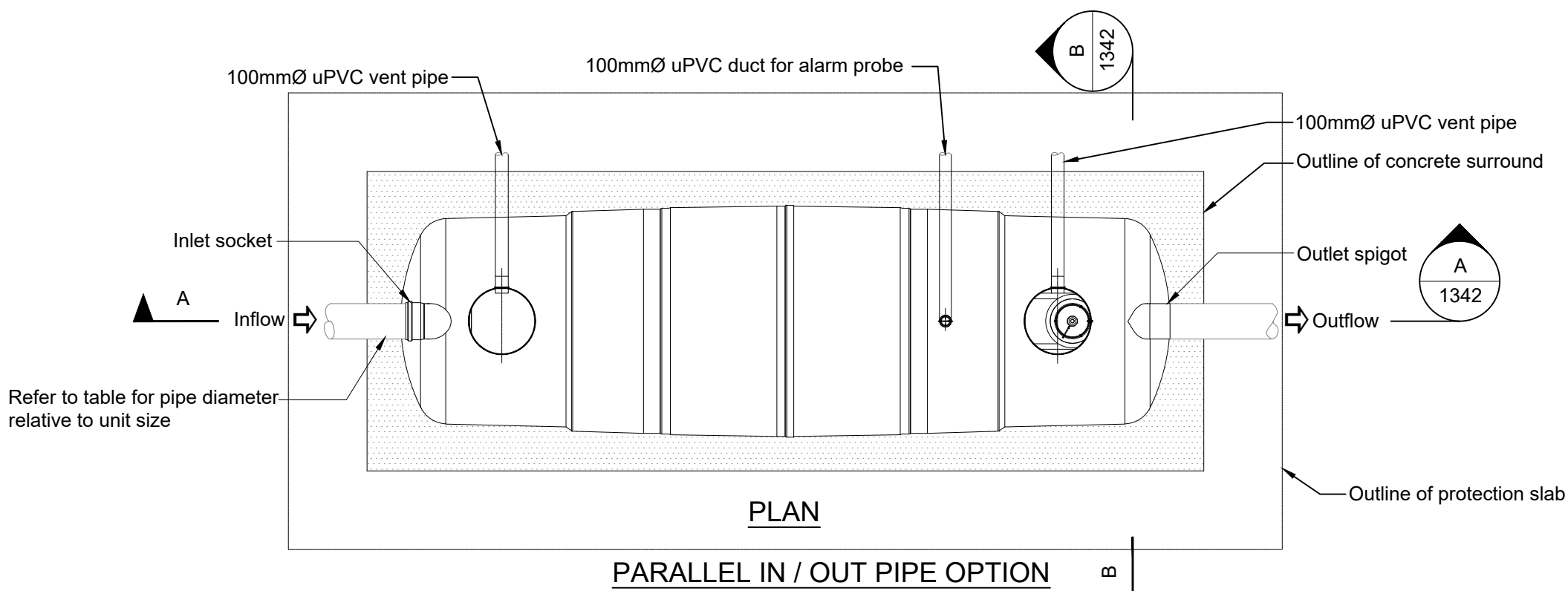
North Connacht 110kV Project

Tonroe 110kV Substation  
Typical Drainage Details  
Sheet 3 of 4

Designed	P.Mc Williams		Eng check	D.Murphy	
Drawn	S. Healy		Coordination	P.Foley	
Dwg check	D.Murphy		Approved	T.Keane	
Scale at A1	1:50	Status	APR	Rev	PL1
				Security	STD

Drawing Number

229100591-MMD-01-XX-DR-D-1313



Required Size and Specification for Full Retention Interceptor														
Network	Unit Class	Unit Nominal Size	Nominal Flow Rate (l/s)	Drainage Area (m²)	Storage Capacity (litres)		Unit Length (mm) 'A'	Unit Dia (mm) 'B'	Base to Inlet Invert (mm) 'C'	Base to Outlet Invert (mm) 'D'	Access Manhole mm	Min. Inlet Invert (mm)	Standard pipework dia (mm) 'E'	Orientation
					Silt	Oil								
A	1	NSFP003	3	170	300	30	1700	1350	1410	1335	600	550	160	